



## Oakville Yacht Squadron Open Regatta

97 Forsythe Street  
Oakville, Ontario L6K 0A3

August 5 - 7, 2016

Incorporating

*J27 North American Championship*

*Etchells Great Lakes Championship*

*Flying Tiger 7.5 One Design Challenge*

*PHRF Distance Dashes*

*Cruiser Lighthouse Challenge*



## SAILING INSTRUCTIONS

The Oakville Yacht Squadron (OYS) is the Organizing Authority for this regatta.

### 1 RULES

- 1.1 The regatta will be governed by the rules as defined in *The Racing Rules of Sailing*.
- 1.2 The prescriptions of Sail Canada will apply and will be posted on the Official Notice Board.
- 1.3 One Design class rules will apply.
- 1.4 Special Flying Tiger sailing instructions – see attachment D
- 1.5 Should there be a conflict between the Notice of Race and the Sailing Instructions, the Sailing Instructions shall apply.

## 2 NOTICES TO COMPETITORS

Notices to competitors will be posted on the official notice board located inside the OYS Clubhouse.

## 3 CHANGES TO SAILING INSTRUCTIONS

Any change to the sailing instructions will be posted before 0900 on the day it will take effect, except that any change to the schedule of races will be posted by 2000 on the day before it will take effect.

## 4 SIGNALS MADE ASHORE

4.1 Signals made ashore will be displayed on the official flagpole on the OYS lawn.

4.2 When flag "AP" is displayed ashore, "1 minute" is replaced with "not less than 60 minutes" in race signal "AP".

## 5 SCHEDULE OF RACES

5.1 The schedule of racing is as follows:

<b><i>Date</i></b>	<b><i>Class</i></b>	<b><i>Competitors Meeting</i></b>	<b><i>Warning Signal</i></b>
Friday, August 5 <sup>th</sup>	J27, Etchells	0930	1100
Saturday, August 6 <sup>th</sup>	All Fleets	0930	1100
Sunday, August 7 <sup>th</sup>	All Fleets	n/a	1000

5.2 Competitor's Meeting will be held in the OYS Clubhouse.

5.3 No Warning Signal will be made after 1500 on Sunday, August 7<sup>th</sup> 2016.

5.4 A maximum of five (5) races per day may be sailed on the One Design courses, one (1) race per day for the PHRF Distance Dashes and one (1) race for the Lighthouse Challenge.

## 6 CLASS FLAGS / START ORDER

<b><i>Class</i></b>	<b><i>Flag</i></b>	<b><i>Course</i></b>	<b><i>Starting Order</i></b>
Etchells	Etchells class flag	Alpha	1
J27	J27 class flag	Alpha	2
Flying Tiger	F	Bravo	1
One Design Class 1	NP 1	Bravo	2
One Design Class 2	NP 2	Bravo	3
One Design Class 3	NP 3	Bravo	4
Light House Challenge Distance Dash	NP 4	Charlie	1
PHRF Distance Dash Group 1	NP 5	Charlie	2
PHRF Distance Dash Group 2	NP 6	Charlie	3

## 7 RACING AREAS

Attachment A shows the locations of the racing areas.

- 7.1 The Alpha Course will be located approximately 1.5nm on a heading of 80° from the entrance of the Oakville Harbour.
- 7.2 The Bravo Course will be located approximately 1.5nm on a heading of 130° from the entrance of the Oakville Harbour.
- 7.3 The start and finish line for the Charlie Course for the PHRF Distance Dash and Light House Challenge will be located approximately 0.5 miles from the Oakville Harbour Lighthouse on a heading of 130°

## 8 THE COURSE

- 8.1 Attachment B shows the courses for the One Design classes including the order in which marks are to be passed, and the side on which each mark is to be left.
- 8.2 The Charlie Course options for the Distance Dash and Light House Challenge are shown in Attachment C.

## 9 MARKS

- 9.1 The marks of the courses will be as follows:

<b>Course</b>	<b>Start</b>	<b>1</b>	<b>1a</b>	<b>2</b>	<b>3</b>	<b>Finish</b>	<b>Change of Course Mark</b>
Alpha	Orange inflatable	Yellow inflatable	Yellow inflatable	Yellow inflatable	Yellow inflatable	Orange inflatable	Green inflatable
Bravo	Red inflatable	Yellow inflatable	Yellow inflatable	Yellow inflatable	Yellow inflatable	Red inflatable	Yellow with black band inflatable
Charlie	Orange inflatable	Yellow inflatable	n/a	Yellow inflatable	Yellow inflatable	Orange inflatable	n/a

- 9.2 In the event of a change of course after the start, only a new windward mark will be laid. There will **NOT** be a new offset mark (1a).
- 9.3 In the event of a missing mark at a gate, the remaining mark shall be rounded to port.

## 10 THE START

- 10.1 The starting line will be between the staff displaying an Orange Flag on the signal boat and the start mark.
- 10.2 A competitor whose warning signal has not been made shall not sail within 50 meters of the starting line during the starting sequence for other races.
- 10.3 A boat starting later than 5 minutes after her starting signal will be scored Did Not Start without a hearing. This changes Rule A4.
- 10.4 Individual recalls: The Race Committee may announce via the applicable VHF channel the sail number or boat name of each premature starter. The failure to announce, or the order in which boats are announced, shall not be grounds for redress. This changes Rule 62.1.
- 10.5 General Recalls: when a General Recall has been signaled, class(es) shall restart after the final scheduled start in the original start sequence. This changes Rule 29.2.
- 10.6 If flag U has been displayed as the preparatory signal, no part of a boat's hull, crew, or equipment shall be in the triangle formed by the ends of the starting line and the first mark during the last minute before her starting signal. If a boat breaks this rule and is identified, she shall be disqualified without a hearing but not if the race is restarted or resailed. This changes rule 26.

- 10.7 The Warning Signal for subsequent races will be made as soon as possible after the last boat in each division has finished the previous race.

## **11 CHANGE OF THE NEXT LEG OF THE COURSE**

- 11.1 To change the next leg of the course, the race committee will lay a new mark (or move the finishing line) and remove the original mark as soon as practicable. When in a subsequent change a new mark is replaced, it will be replaced by the original mark.
- 11.2 Except at a gate, boats shall pass between the race committee boat signaling the change of the next leg and the nearby mark, leaving the mark to port and the race committee boat to starboard. This changes rule 28.1.

## **12 PENALTY SYSTEM**

- 12.1 A boat may take a One-Turn Penalty when she may have broken one or more rules of Part 2 in an incident while racing. This changes rule 44.1

## **13 THE FINISH**

- 13.1 The finishing line will be between a staff displaying an orange flag on the signal boat and the finish mark.
- 13.2 If the Race Committee does not plan to run another race, it will fly Code Flag H at the finish.

## **14 TIME LIMITS AND TARGET TIMES:**

### **One Design Classes**

- 14.1 The time limit to reach the first mark is 30 minutes.
- 14.2 The time limit for each race will be 2 hours.
- 14.3 Any yacht not finishing within 30 minutes after the first yacht in her division to finish, will be scored DNF without a hearing. This changes rule 35, A4, and A5.
- 14.4 Failure to meet the time limits and target times will not be grounds for redress. This changes rule 62.1(a)

### **PHRF Distance Dash**

- 14.5 Any yacht not finishing by 1700 on Saturday will be scored DNF without a hearing. This changes rule 35, A4, and A5.
- 14.6 Any yacht not finishing by 1530 on Sunday will be scored DNF without a hearing. This changes rule 35, A4, and A5.
- 14.7 Failure to meet the time limits and target times will not be grounds for redress. This changes rule 62.1(a)

## **15 PROTEST AND REQUESTS FOR REDRESS:**

- 15.1 Protest forms will be available at the Sailing Office. Protests and requests for redress or reopening shall be delivered there within the appropriate time limit.
- 15.2 For each course, the protest time limit is 60 minutes after the last boat to finish the final race of the day.
- 15.3 Notices will be posted no later than 30 minutes after the protest time limit to inform competitors of hearings in which they are parties or named as witnesses. Hearings will be held in the protest room in the clubhouse.
- 15.4 RRS 62.2 and 66 are changed to provide that on Sunday, August 7<sup>th</sup>, requests for redress and request to reopen a hearing must be filed no later than 30 minutes after the time that final results are posted.

## **16 ARBITRATION:**

- 16.1 For a protest between two boats alleging a breach of a rule of Part 2 or rule 31 where there has been no damage and no injury, and both parties are in agreement, an arbitration hearing may be held prior to the protest hearing.
- 16.2 Notices will be posted no later than 30 minutes after the protest time limit to inform competitors of hearings in which they are parties or named as witnesses. Hearings will be held in the protest room, in the Club House, beginning at the time posted.
- 16.2 One representative from each boat will appear before an arbitrator.
- 16.3 After hearing testimony from each party, the arbitrator shall reach one of the following conclusions:
  - (a) There was no breach of a rule. If the protestor(s) agrees, the protest is withdrawn and cannot be reopened.
  - (b) There was a breach of a rule. If the offending boat(s) agree, a 40% penalty will be imposed and no further hearing will occur.
  - (c) The matter should go to protest committee for a full hearing.This changes Part 5, Section B of the RRS.

## **17 SCORING**

- 17.1 One (1) race will constitute a series.
- 17.2 When fewer than five (5) races have been completed, a boat's series score will be the total of her races.
- 17.3 When from five (5) to nine (9) races have been completed, a boat's series score will be the total of her race scores excluding her worst score.
- 17.4 When ten (10) or more races have been completed, a boat's series score will be the total of her race scores excluding her two (2) worst scores.
- 17.5 To request correction of an alleged error in posted race or series results, a boat shall complete a scoring inquiry form available at the protest desk.

## **18 BOW ANCHORS**

All anchors will be removed from the bow while boats are racing, with the exception of boats sailing in the Lighthouse Challenge

## **19 SAFETY**

- 19.1 On the water each competitor must check in (and hail sail number) with the race committee signal boat and ensure that they have been acknowledged before the warning signal of the first start.
- 19.2 Any boat retiring from a race, shall notify the Race Committee as soon as possible.

## **20 RADIO COMMUNICATION**

Competitors with VHF radios are encouraged to monitor:

- Alpha Course - Channel 71.
- Bravo Course - Channel 72.
- Charlie Course - Channel 69

## **21 PRIZES**

- 21.1 Prizes will be awarded for first, second and third place for each fleet.
- 21.2 The J/27 North American Trophy will be awarded to the boat with the lowest series score.
- 21.3 The Etchells Great Lake Championship trophy will be awarded to the boat with lowest series score.

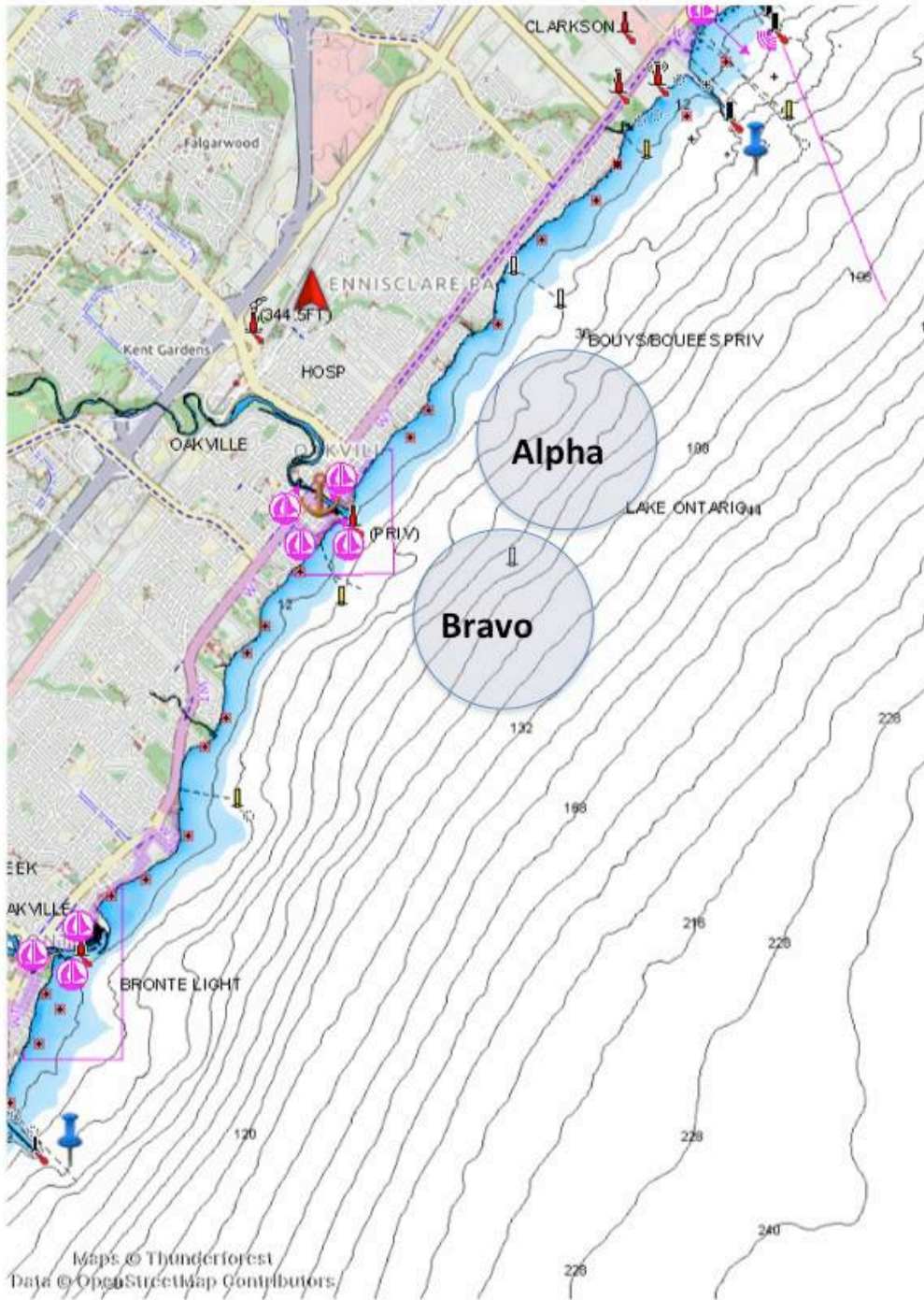
## **22 LIABILITY**

Competitors participate in the regatta entirely at their own risk. See rule 4, Decision to Race. The organizing authority will not accept any liability for material damage or personal injury or death sustained in conjunction with or prior to, during, or after the regatta.

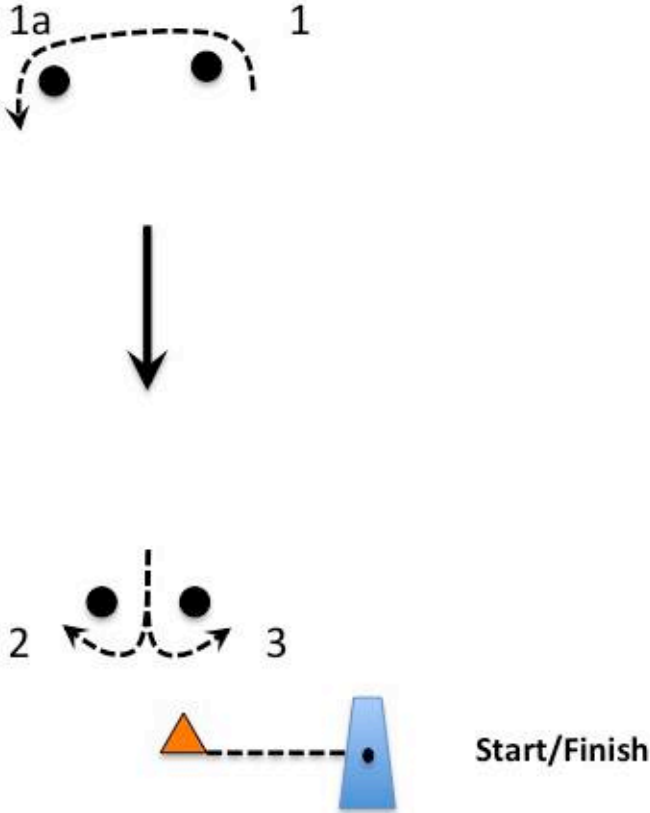
**23 INSURANCE**

Each participating boat shall be insured with valid third-party liability insurance with a minimum cover of \$2,000,000 for Canadian boats and \$350,000 USD for other countries.

**Attachment A Location of Courses**



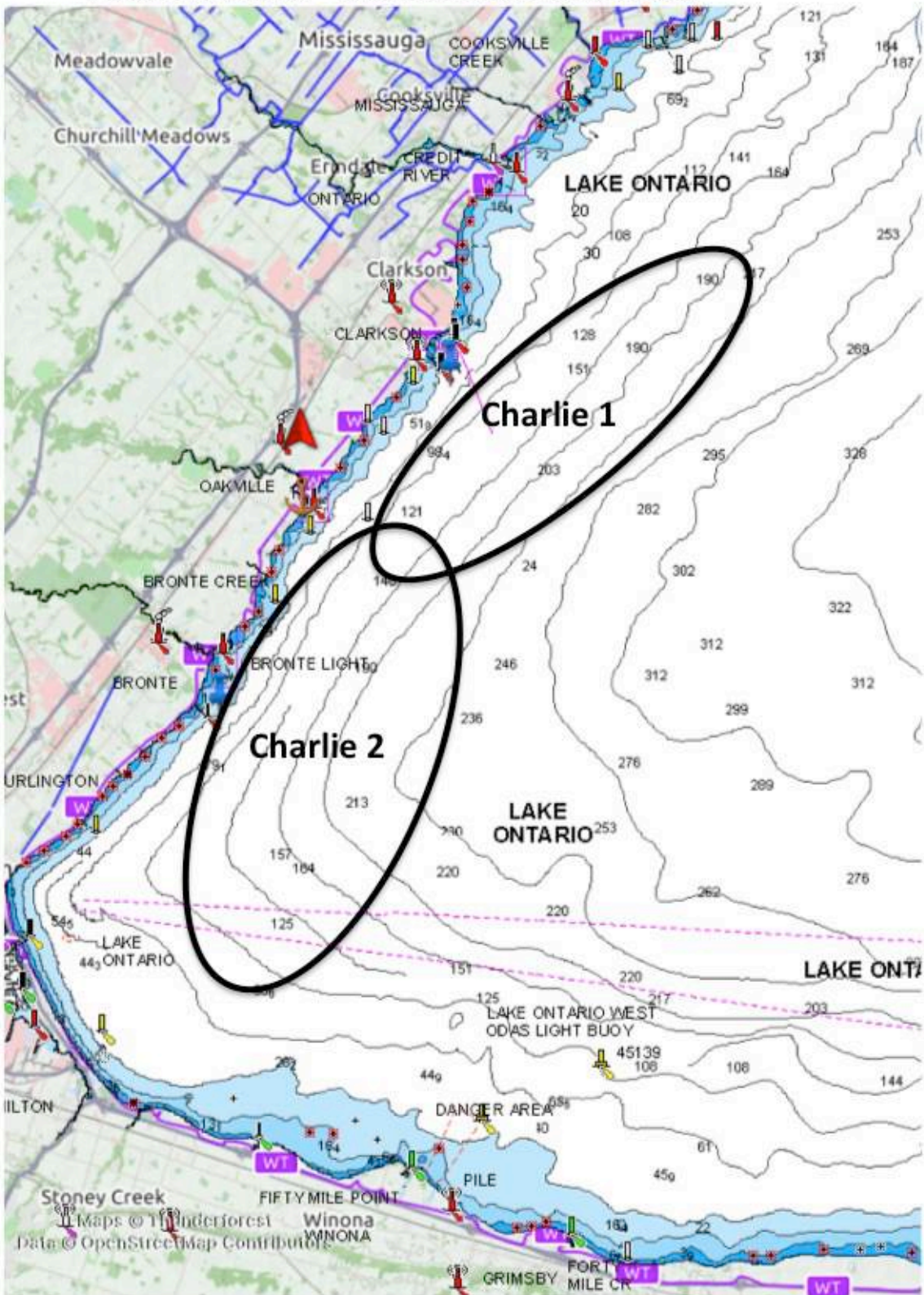
Attachment B – One Design Course Diagram



Course: START - 1 - 1a - 2/3 - 1 - 1a - FINISH



## Attachment C – Distance Dash Courses





## **Attachment D      Flying Tiger Special Sailing Instructions**

### **1            ELIGIBILITY AND ENTRY**

- 1.2      Crew Requirements:      Maximum total of 5 crew (no weight limits)
- 1.3      Eligible teams may enter by completing the on-line registration with 1D Sailing by July 25, 2016.
- 1.4      The following restrictions on the number of boats apply: A maximum of 8 teams may apply to participate. National 1DSailing Academy reserves the right to accept or deny any or all applications.

### **2            BOATS**

- 2.1      The event will be sailed in Flying Tiger 7.5s provided by National One Design Sailing Academy.
- 2.2      Boats will be provided for approved competitors, who shall not modify them or cause them to be modified in any way except that
  - (a) A compass may be tied or taped to the hull or spars; the compass may not be capable of receiving or sending any data of any kind and shall show boat's heading only;
  - (b) Wind indicators, including yarn or thread, may be tied or taped anywhere on the boat;
  - (c) Hull, deck and rudder may be cleaned, but only with water;
  - (d) Adhesive tape may be used anywhere above the gunwale.
- 2.3      All equipment provided with the boat for sailing purposes shall be in the boat while afloat.
- 2.4      The penalty for not complying with one of the above instructions will be disqualification from all races sailed in which the instruction was broken.
- 2.5      Competitors shall report any damage or loss of equipment, however slight, to the organizing authority's representative immediately after securing the boat ashore. The penalty for breaking this instruction, unless the protest committee is satisfied that the competitor made a determined effort to comply, will be disqualification from the race most recently sailed.
- 2.6      Boat allocations will be decided by a drawing of boat numbers at the Competitors Meeting.

### **3            FEES**

- 3.1      Required registration fee is \$640.00 + HST.
- 3.2      Teams must provide a \$1,500.00 refundable damage deposit at registration. An outline of damage costs will be provided at the event.

### **4            SCHEDULE**

- 4.1      Boats will be available for open practice between 1300 and 1900 hours on Friday September 25 to registered participants.

### **5            BERTHING**

Boats shall be kept in their assigned places while they are in the harbour.

### **6            FURTHER INFORMATION**

For further charter information please contact [inf@1dsailing.com](mailto:inf@1dsailing.com).